

Gloria (Angels We Have Heard on High)



based on the recording from the album
Doorpost Songs: Unto Us by Dave & Jess Ray

David Ray

♩ = 140

A *HUGE!* *EG cues*

cym. swell

D

6

**THIS IS A
PREVIEW OF
PRINT MUSIC FROM
SIX:EIGHTEEN MUSIC
THANK YOU
FOR NOT
PRINTING
THIS MUSIC
AND BUYING A COPY
INSTEAD**

A *band out piano only* *piano cues*

10

N.C. *sub. ♯*

An - gels we have heard on high

14

sweet - ly sing - ing o'er the plains, and the moun - tains in re - ply

Dma⁷ *2 Pre Chorus* *+ EG swells*

18

e - cho back their joy - ous strains: Glo - ri - a!

A **C#** **D** **E** **F#m**

22

Glo - ri - a! Glo - ri - a in the high -

E **1a Verse** **A** *+ band*

26

est!

ALL Shep - herds why this ju - bi - lee?
Come to Beth - le - hem and see

Gloria (Angels We Have Heard on High)

based on the recording from the album
Doorpost Songs: Unto Us by Dave & Jess Ray

David Ray

♩ = 140

A



D



A N.C.



F#m7

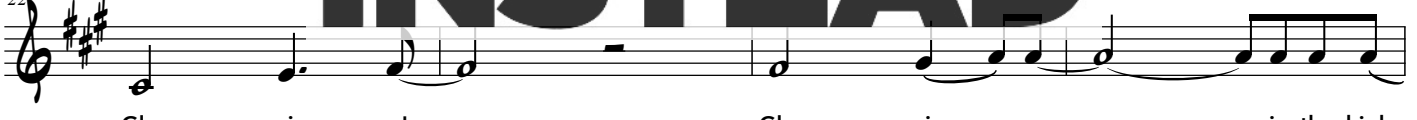


Dma7



A

C#

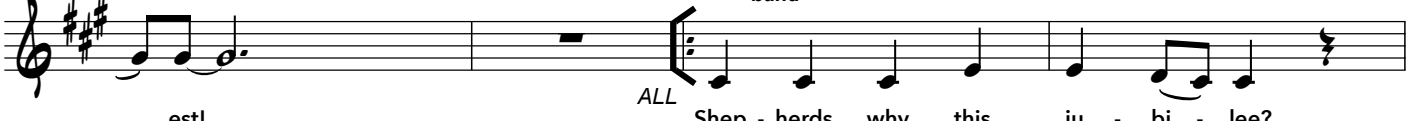


E

1a Verse

A

+ band



est!

ALL



Shep - herds why this ju - bi - lee?
Come to Beth - le - hem and see

Piano-Vocal (SATB)

Gloria (Angels We Have Heard on High)

based on the recording from the album
Doorpost Songs: Unto Us by Dave & Jess Ray



David Ray

$\text{♩} = 140$ **A**

cym. swell **ff**

**THIS IS A
PREVIEW OF
PRINT MUSIC FROM
SIX:EIGHTEEN MUSIC
THANK YOU
FOR NOT
PRINTING
THIS MUSIC
AND BUYING A COPY
INSTEAD**

D

6

Verse

10

10

sub. p **A**

10

An - gels we have heard on high

14

sweet - ly sing - ing o'er the plains, and the moun - tains in re - ply

14

18

e - cho back their joy - ous strains: Glo - - ri - a!

18

Dma⁷ E

THIS IS A PREVIEW OF PRINT MUSIC FROM SIX:EIGHTEEN MUSIC THANK YOU FOR NOT PRINTING THIS MUSIC AND BUYING A COPY INSTEAD

2 Pre-Chorus

The image shows a musical score for the hymn 'Gloria (Angels We Have Heard on High)'. It features a vocal line and a piano accompaniment. The score is partially obscured by a large, bold, black watermark that reads: 'THIS IS A PREVIEW OF PRINT MUSIC FROM SIX:EIGHTEEN MUSIC THANK YOU FOR NOT PRINTING THIS MUSIC AND BUYING A COPY INSTEAD'. The watermark is centered over the piano part and extends across the vocal line. The musical notation includes treble and bass clefs, a key signature of three sharps (F#, C#, G#), and a 2/4 time signature. The lyrics are: 'sweet - ly sing - ing o'er the plains, and the moun - tains in re - ply' and 'e - cho back their joy - ous strains: Glo - - ri - a!'. There are measure numbers 14 and 18. Chord symbols 'Dma⁷' and 'E' are present. A 'Pre-Chorus' section is also indicated.